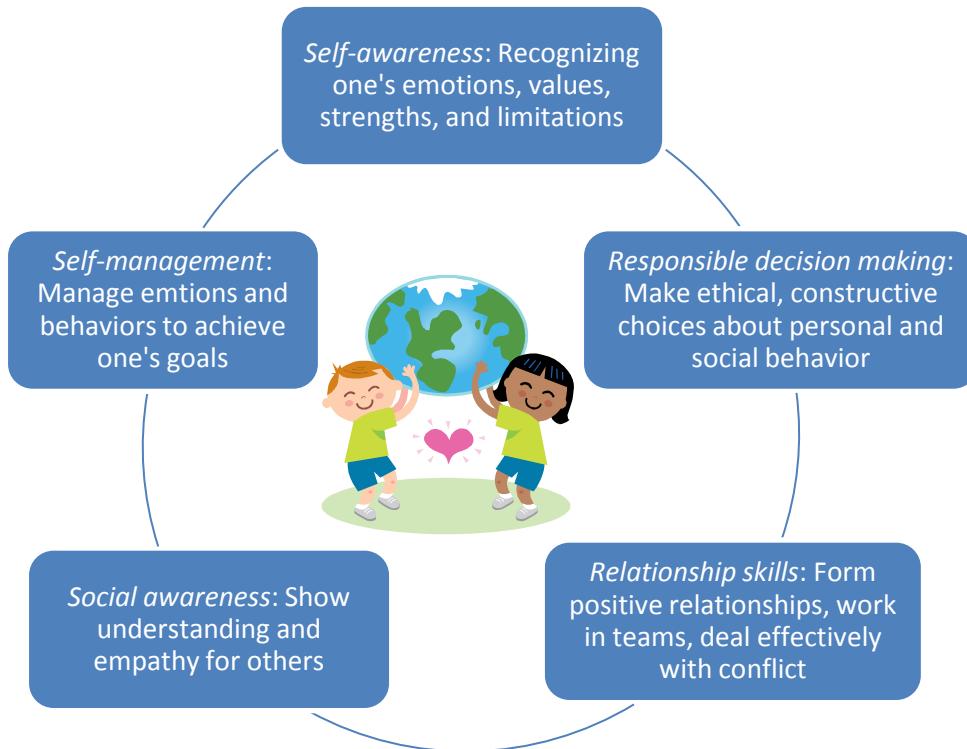


# Social Emotional Learning (SEL) 2011-2012



SEL is a process of acquiring knowledge and skills related to five core competencies:  
(We will be discussing these all year using class lessons, discussions, literature & schoolwide events)



1. September - Attitude: how you express yourself through words and actions
2. October - Respect: treating others the way you want to be treated
3. November - Responsibility: being dependable and making good choices
4. December - Tolerance: respecting the beliefs and practices of others
5. January - Compassion: being kind and thoughtful towards others
6. February - Empathy: being aware of someone else's feelings
7. March - Honesty: being truthful and sincere
8. April - Perseverance: working hard and not giving up
9. May - Integrity: making choices that help you be the best person you can be
10. June - Dependability: knowing that people trust you and can count on you



OLD BETHPAGE ELEMENTARY SCHOOL  
1159 ROUND SWAMP ROAD  
OLD BETHPAGE, NY 11804

PHONE: 516-756 - 3200  
MRS. HOFFMAN 516-756-2212  
E-MAIL: JHOFFMAN@POB.K12.NY.US



LOOK ON THE NEXT  
PAGE FOR BOOK  
RECOMMENDATIONS  
TO DISCUSS THE  
THEMES AT HOME!